

Facials & Advanced Skin Treatments

- Face mapping and skin analysis Free

Dr Pen Induction Therapy / Micro-needling

Dr Pen is a micro-needling treatment with minimum downtime which promotes scarless healing and natural collagen production in the skin to improve the appearance of scars, acne scarring, stretch marks, wrinkles, pigmentation and rejuvenate the skin.

- Face only R1250
- Face, neck and décolleté R1350
- Add on Alpha peel to micro-needle treatment R330
- Add on Retistore peel to micro-needling treatment R560

Lamelle

• Essential skin specific facial 60min R590
Our essential skin specific facial is designed to target a multitude of skin concerns. The customizable treatment is a luxurious experience, that can be customized by the therapist to give the client, the desirable results.

• Alchemy facial R700
This facial is a step up from our essential skin specific facial. This facial includes a custom mixed serum for your skin.

• Teen facial 45 min R430
Perfect facial for all teenagers struggling with breakouts or who wants to prevent problematic skin. This facial includes high frequency.

• Essential Age prevention with Lactifirm peel R990
A 90 min indulgent facial with our Lactifirm peel to help combat aging. It is a very comfortable peel with no down time. This is a skin-firming, skin-plumping and revitalising treatment.

• Age prevention with Lactifirm peel & custom mixed serum R1100
A 90 min indulgent facial with our Lactifirm peel to help combat aging. It is a very comfortable peel with no down time. This is a skin-firming, skin-plumping and revitalising treatment. This facial also includes a custom mixed serum for your skin and whatever is not used in treatment, you get to take home.

• Professional Alpha peel 30% R680
Alpha- hydroxy Acid is a Glycolic Acid derived from sugar cane. This peel is best for treating photo-aging or sun damaged skin.

• Professional Alpha peel 30% (peel only) 30 min R420

• Professional Lactifirm 90/10 peel R695
Lactifirm acid is an Alpha-hydroxy acid peel derived from milk. It is a very comfortable, skin-firming and revitalising treatment with no downtime.

• Professional Lactifirm 90/10 peel (peel only) 30 min R450

• Professional Beta Plus peel R670
This is a Salicylic acid that is derived from the bark of a willow tree. The Beta Plus peel is formulated specifically to be effective at removing black or whiteheads and congestion. It's also extremely ant-inflammatory and calms aggressive inflammatory reaction in inflammatory acne.

• Professional Beta Plus peel (peel only) 30 min R370

• Professional Beta 20% peel 2 Layers R700
This Salicylic acid it derived from willow tree. This is a self-neutralising peel. This is a deeper peel, and you will have some flaking a few days after the treatment. This peel helps with pigmentation, congestion and anti-aging.

• Professional Augmented Beta 20% peel with TCA R970
This treatment combines the beta skin peel, retinol and TCA. The flaking with this treatment will be more severe. This facial is used to treat severe aging and resistant pigmentation.

• Retistore or Retistore plus R780 - R870
Retinol-based peel that gives us a full epidermal restructuring with virtually NO discomfort and a very comfortable period of downtime. that is more socially acceptable.

• AzeAc peel R690
This peel is used to improve inflammatory acne by an average of 40% in as little as 6 treatments performed every two weeks. It can also reduce skin oiliness by about 13% over 12 weeks.

• Professional Rice Bran AO Peel R650
This a leave-on, superficial chemical peel that is indicated for the treatment of age prevention. It also has skin brightening. It also increases your skin's ability to protect itself from the sun by aiding your SPF to be more effective and assists in decreasing inflammation and improving skin healing.

• Synergy peel R650
Introducing Synergy Peel, a cutting-edge bioactive superficial chemical peel designed to deliver exceptional skin improvement with significantly reduced risk and side effects. This revolutionary in-office treatment offers results comparable to more intensive peels traditionally associated with a higher risk, making it a game-changer for those wanting dramatic results with minimal discomfort and downtime.

- Add on a Dermaheal Growth factor sheet mask R140
- Add Alginate mask R120
- Add Nano-needle R200
- Add on TCA spot peel per area R120
- Add on customised serum R160

Environ

• Deep cleanse / Hydrating Facial 60 min R560
This is our Environ power hour facial that can be adjusted for what the client skin needs.

Environ Ionzyme DF Machine Facial

With this treatment we aim to target the root cause of your skin concern with this revolutionary skincare technology.

- Essential facial 60 min R750
- Youth reset facial 90 min R890
- Focus-On treatment 30 min R450

Environ Peel

- | | with DF Machine | without DF Machine |
|-----------------------------|-----------------|--------------------|
| • Youth renew cool peel | R910 | R750 |
| • Blemish control cool peel | R730 | R650 |
| • Youth renew cool peel | R730 | R650 |

Dermaplaning

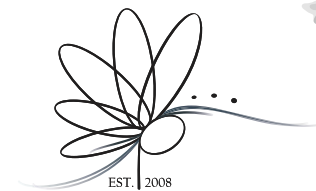
Dermaplaning makes the skin smoother, softer, and brighter. It can help reveal healthy skin beneath dead skin cell layers. It also helps improve the penetration of skincare products and preps the skin for additional procedures like lasers and peels.

• Dermaplaning facial 45 min R670
This treatment entails cleansing of the skin, exfoliating, dermaplaning treatment, mask and moisturiser.

• Add on to any facial (extra 15 min) R310

Spray Tans

- Full body spray tan R375
- 1/2 body spray tan R270
- Full body exfoliation with spray tan R580



EST. | 2008

Beauty at the Bay

DAY SPA



044 691 2817

5 Point Road, Mossel Bay, 6500

info@beautyatthebay.co.za



Hands & Feet

Hands

• Classic Manicure	R260
• Deluxe Manicure (Incl. Paraffin Dip)	R355
• French Manicure	R290
• Mini Manicure	R160

Feet

• Classic Pedicure	R325
• Deluxe Pedicure (Incl. Paraffin Dip)	R385
• French Pedicure	R335
• Medical Pedicure	R425
• Medi Heel Treatment Only	R300
• Mini Pedicure	R190

• Add on Paraffin dip	R140
• Add on Gel	R100

Bio Sculpture Gel

• Gel overlay	R340
• Faded French Gel Overlay	R380
• Manicure with Gel Overlay	R390
• Pedicure with Gel overlay	R390
• Tip Extensions	R460
• French Tip Extensions	R470
• Nail Art	R15 - R30
• Nail Repair	R40

Follow Up Appointment

• Gel Overlay Fill	R375
• Gel Removal with Mini Manicure	R250
• Gel Removal Prior to New Gel Application (30 min)	R90
• Acrylic Removal Prior to New Gel Application (60 min)	R125
• Gel Removal only	R160

LCN/Acrylic

• Overlay	R395
• Follow up appointment	R485
• Pedique pedicure	R400
• Toe brace (Helps prevent ingrown toe nails)	Per toe nail R360

Waxing

• Bikini	From R190
• G-String	R230
• Brazilian	R290
• Hollywood	R365
• Full leg	R310
• ¾ Leg	R240
• ½ Leg	R210
• Under arm	R130
• Arms	R150 - R190
• Lip	R75
• Chin	R85
• Brow Shape and Wax	R110
• Brow	R85
• Full face wax	R230

Tinting

• Lash tint	R115
• Brow tint	R85
• Lash and Brow tint	R175

Lovella Lash Lift

A lash lift creates a subtle, natural-looking lift, giving the illusion of length and making the eyes appear more open. R470
A lash lift is a great alternative for clients who want a long-lasting alternative, but don't have the time needed to maintain eyelash extensions.

Brow Lamination

This innovative technique is used to smooth, straighten and lift the brow hairs into a more vertical position to create the illusion of more defined looking eyebrows. Whether your brows are over-plucked, unruly, thinning or has gaps, this new procedure will lift them up to conceal any flaws. Think of this as a Lash Lift, but for your brows! R460

Henna Eyebrows

The therapist will do a complete eyebrow redesign by measuring the perfect shape for the client according to the golden ratio. R300
An eyebrow template will be created where after the tint mixture can be applied to create a solid or ombre colour effect. The Henna Spa will last approximately 1 week on the skin and up to 4 weeks on the eyebrow hairs.

Lash Extensions

• Classic	R470
• 3D	R600
• Lash Fill (2 weeks)	R300
• Lash Fill (3 weeks)	R370
• Lash Removal from	R190

Lash Cluster

Lash cluster is for the woman who would like the look of lash extension but don't have the time to lie down for a full set or just want beautiful lashes for an occasion. Lash clusters only last for 3-5 days. Treatment only takes 20-30 min R350

Body Treatments

• Full Body Exfoliation	R280
• Purifying Back Treatment	R530

Packages

• Half Day Spa Package	R1700
Full Body Exfoliation	
Swedish full body massage	
Deep Cleanse / Hydrating Facial	
Mini Manicure	
Classic Pedicure	
• Rejuvenating Package	R930
Full Body Exfoliation	
Aroma therapy Back & Neck Massage	
Indian Head or Foot Massage	
• Renewal Package	R850
Aroma therapy Back & Neck Massage	
Deep Cleanse / Hydrating Facial	
• Pamper Package	R1030
Deep Cleanse / Hydrating Facial	
Classic Manicure	
Classic Pedicure	

Massages

• Swedish Back & Neck	30 min R375 / 45 min R455
• Swedish Full Body	60 min R565
• Aromatherapy Back & Neck	30 min R385 / 45 min R465
• Aromatherapy Full Body	60 min R575
• Deep Tissue Back and neck	45 min R500
• Deep Tissue Full Body	60 min R595
• Hot Stone Back & Neck	30 min R410 / 45 min R500
• Hot Stone Full Body	60 min R610
• Pregnancy massage	45 min R500
• Pregnancy massage	60 min R600
• Leg & Foot Massage	30 min R360
• Indian head Massage	30 min R370

Male Grooming

• Brow Wax	R85
• Ear wax	R80
• Nose wax	R80
• Chest Wax from	R235
• Stomach wax	R165
• Chest and stomach wax	R330
• Back Wax from	R285
• Full Leg Wax	R370
• Arm Wax	R270

Trading Hours

Monday to Friday : 08.00 - 17.00
& Saturday : 08.00 - 13.00

(extended hours during peak season / on request)

Terms & Conditions

**Prices are subject to change without notice
24h cancellation policy.**

All treatments are done at own risk.



f: @beautyatthebaymosselbay
i: @beautyatthebay_day_spa

